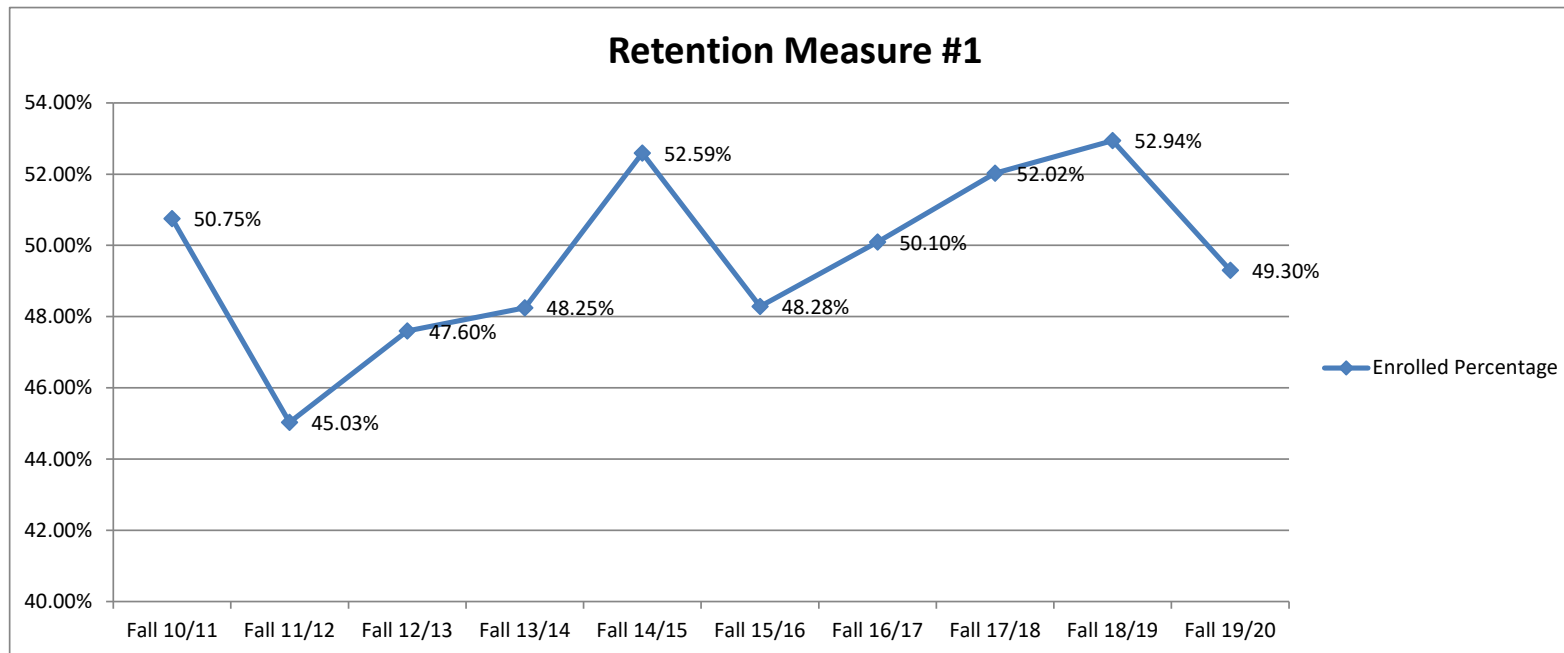


Retention Measure #1

Graphical representation of the percentage of first-time at Kirtland students taking credits classes who enter in a fall semester and who enroll again in the subsequent fall semester.

New In Year	Subsequent Year	Enrolled Percentage
Fall 09/10	Fall 10/11	50.75%
Fall 10/11	Fall 11/12	45.03%
Fall 11/12	Fall 12/13	47.60%
Fall 12/13	Fall 13/14	48.25%
Fall 13/14	Fall 14/15	52.59%
Fall 14/15	Fall 15/16	48.28%
Fall 15/16	Fall 16/17	50.10%
Fall 16/17	Fall 17/18	52.02%
Fall 17/18	Fall 18/19	52.94%
Fall 18/19	Fall 19/20	49.30%

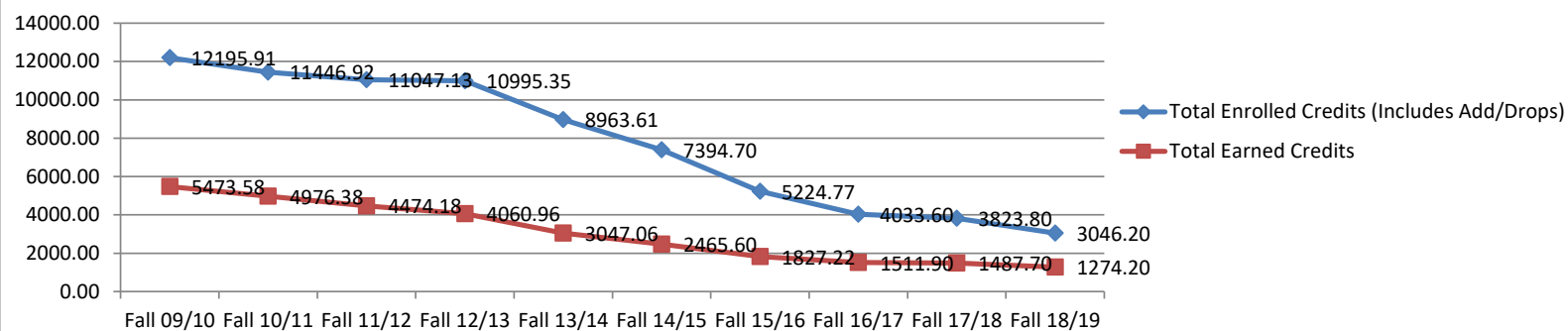
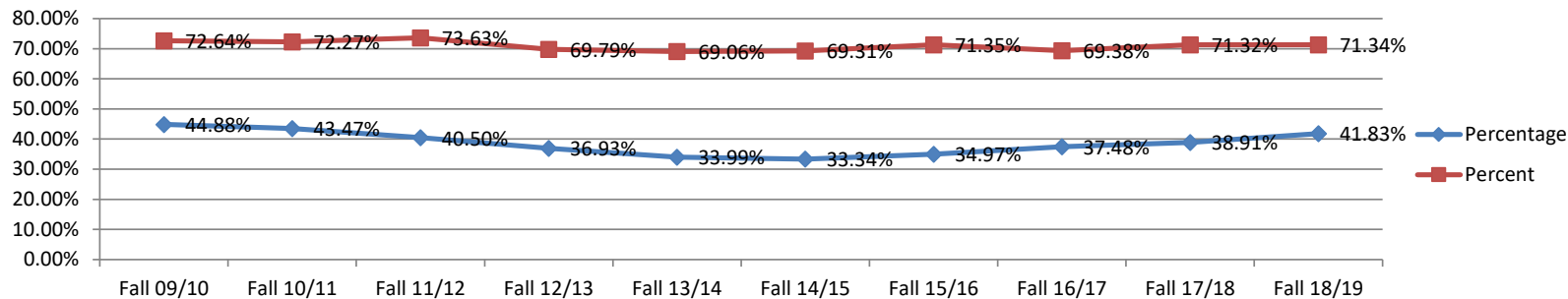


Retention Measure #2

Graphical representation of the percentage of credit courses that Development students complete by the end of the semester as compared to the number of credit courses in which they enrolled (attempted).

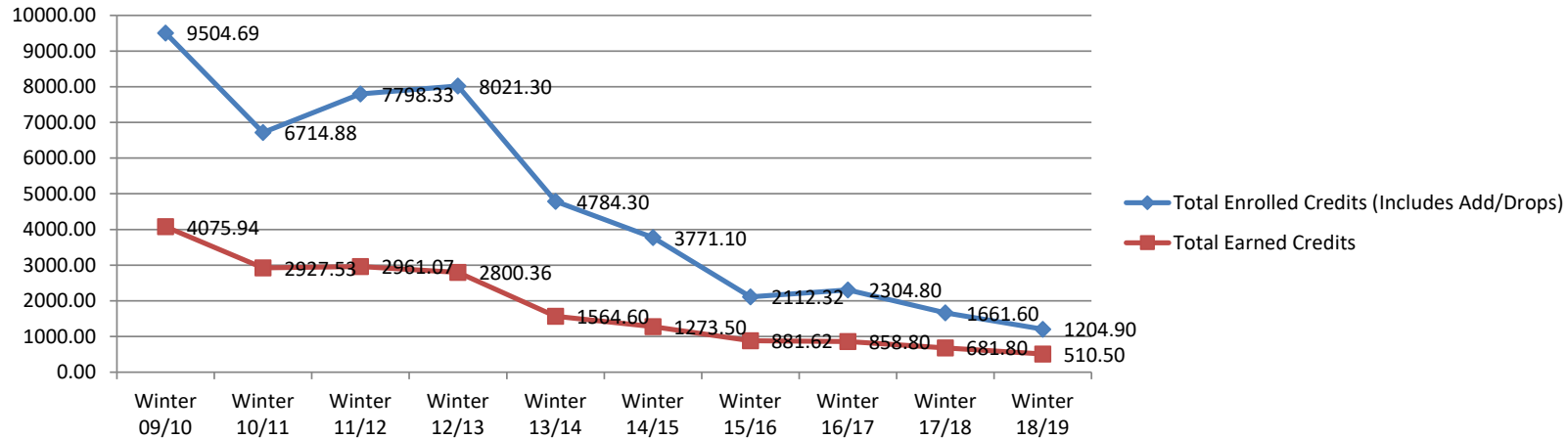
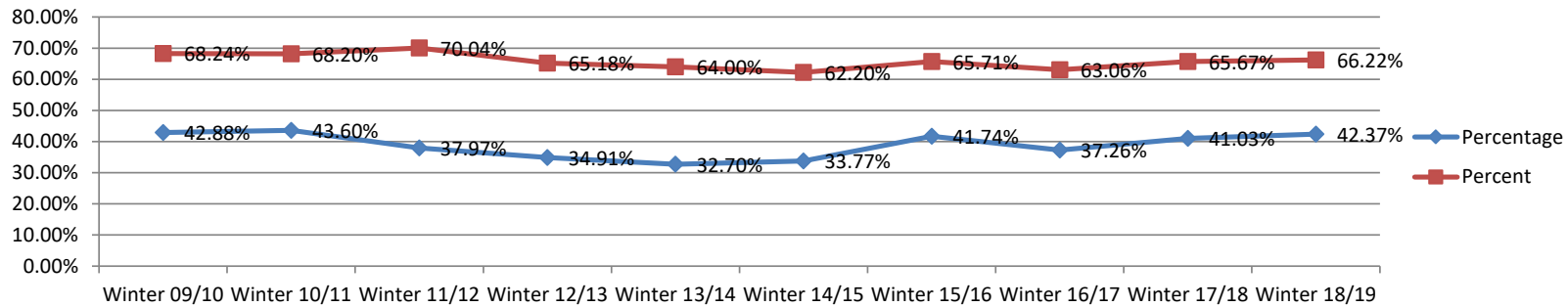
Term/Year	Total Enrolled Credits (Includes Add/Drops)	Total Earned Credits	Percentage		Non-Drop Enrolled	Percent
Fall 09/10	12195.91	5473.58	44.88%		7534.84	72.64%
Fall 10/11	11446.92	4976.38	43.47%		6885.76	72.27%
Fall 11/12	11047.13	4474.18	40.50%		6076.95	73.63%
Fall 12/13	10995.35	4060.96	36.93%		5819.23	69.79%
Fall 13/14	8963.61	3047.06	33.99%		4412.06	69.06%
Fall 14/15	7394.70	2465.60	33.34%		3557.60	69.31%
Fall 15/16	5224.77	1827.22	34.97%		2560.92	71.35%
Fall 16/17	4033.60	1511.90	37.48%		2179.20	69.38%
Fall 17/18	3823.80	1487.70	38.91%		2086.00	71.32%
Fall 18/19	3046.20	1274.20	41.83%		1786.20	71.34%

Retention Measure #2 Fall Trend



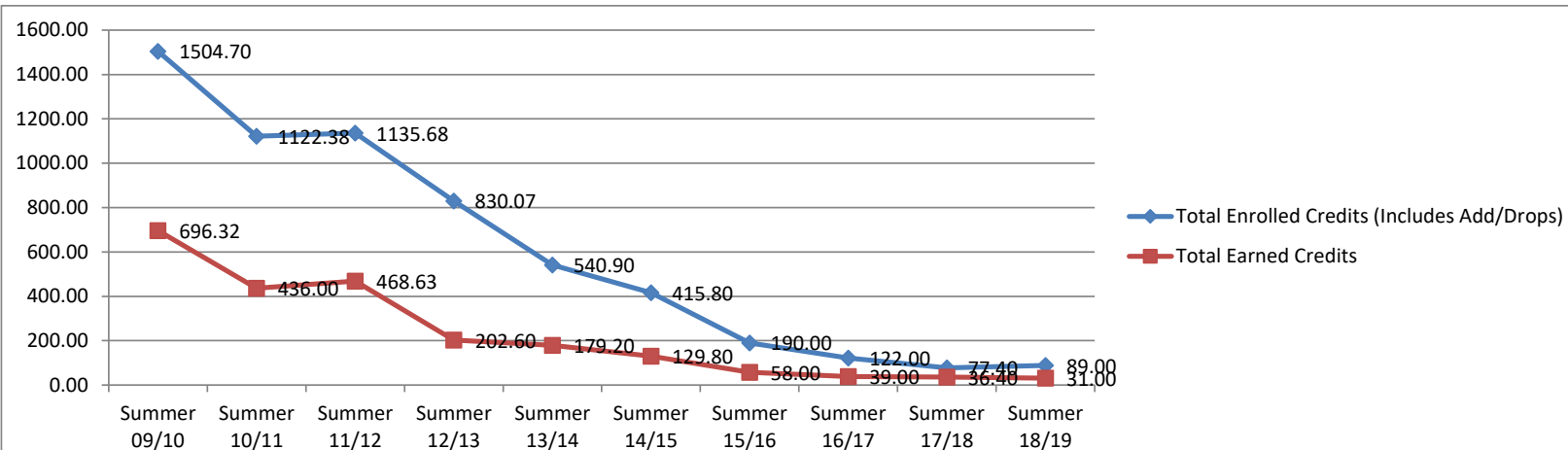
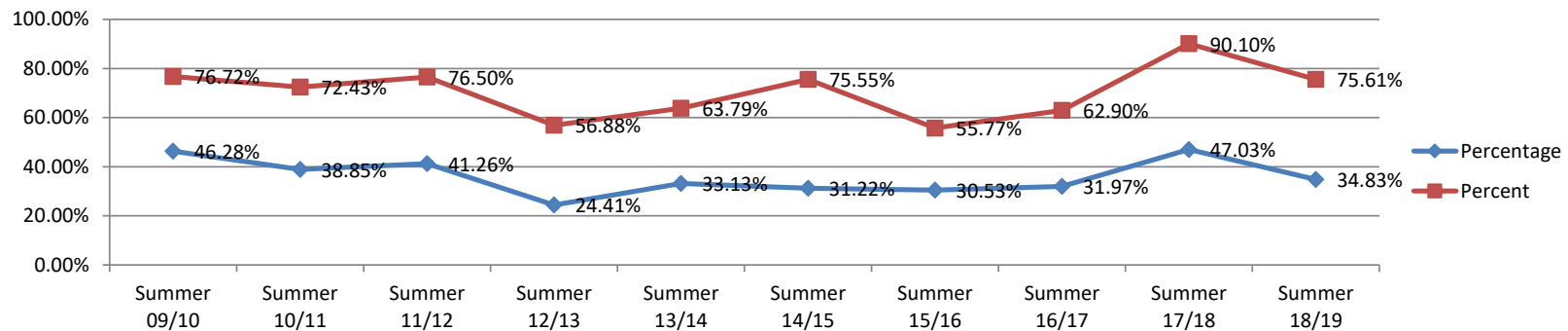
Term/Year	Total Enrolled Credits (Includes Add/Drops)	Total Earned Credits	Percentage		Non-Drop Enrolled	Percent
Winter 09/10	9504.69	4075.94	42.88%		5973.17	68.24%
Winter 10/11	6714.88	2927.53	43.60%		4292.49	68.20%
Winter 11/12	7798.33	2961.07	37.97%		4227.67	70.04%
Winter 12/13	8021.30	2800.36	34.91%		4296.21	65.18%
Winter 13/14	4784.30	1564.60	32.70%		2444.60	64.00%
Winter 14/15	3771.10	1273.50	33.77%		2047.50	62.20%
Winter 15/16	2112.32	881.62	41.74%		1341.62	65.71%
Winter 16/17	2304.80	858.80	37.26%		1361.80	63.06%
Winter 17/18	1661.60	681.80	41.03%		1038.30	65.67%
Winter 18/19	1204.90	510.50	42.37%		770.90	66.22%

Retention Measure #2 Winter Trend



Term/Year	Total Enrolled Credits (Includes Add/Drops)	Total Earned Credits	Percentage		Non-Drop Enrolled	Percent
Summer 09/10	1504.70	696.32	46.28%		907.58	76.72%
Summer 10/11	1122.38	436.00	38.85%		602.00	72.43%
Summer 11/12	1135.68	468.63	41.26%		612.58	76.50%
Summer 12/13	830.07	202.60	24.41%		356.17	56.88%
Summer 13/14	540.90	179.20	33.13%		280.90	63.79%
Summer 14/15	415.80	129.80	31.22%		171.80	75.55%
Summer 15/16	190.00	58.00	30.53%		104.00	55.77%
Summer 16/17	122.00	39.00	31.97%		62.00	62.90%
Summer 17/18	77.40	36.40	47.03%		40.40	90.10%
Summer 18/19	89.00	31.00	34.83%		41.00	75.61%

Retention Measure #2 Summer Trend



Retention Measure #3

Graphical representation of the percentage of student enrollment in the following categories compared to total student populations enrolled in credit classes in a given year.

Category A = New: Students who are new to the college

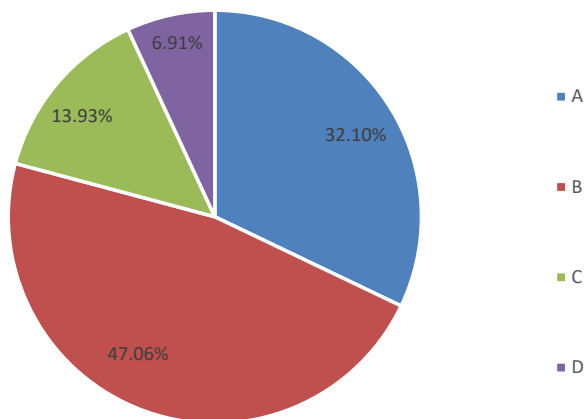
Category B = Continuing: Students who are enrolled in a given year and have taken classes in the previous year

Category C = Stop Outs: Students who are enrolled in a given year after a one-year absence

Category D = Occasional: Students who are enrolled in a given year after being absent for two or more years.

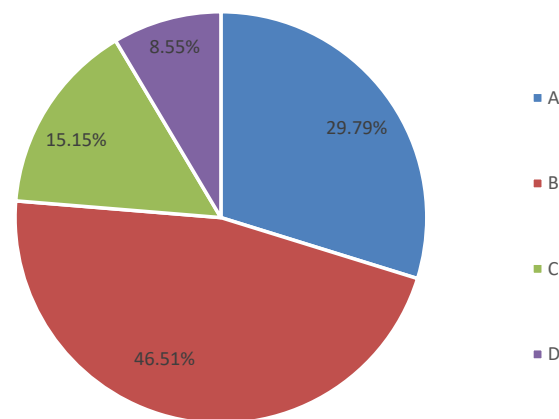
	Year									
Category	09/10	10/11	11/12	12/13	13/14	14/15	15/16	16/17	17/18	18/19
A	28.29%	25.60%	22.73%	26.35%	28.94%	29.14%	31.27%	32.10%	30.77%	29.79%
B	44.84%	48.73%	46.21%	48.92%	45.59%	49.51%	47.71%	47.06%	47.43%	46.51%
C	3.18%	2.54%	2.99%	4.17%	5.21%	14.01%	15.08%	13.93%	14.17%	15.15%
D	23.70%	23.14%	28.07%	20.56%	20.26%	7.34%	5.93%	6.91%	7.63%	8.55%

16/17 Retention Measure #3



Two Years Ago

18/19 Retention Measure #3



Most Recent Complete Year