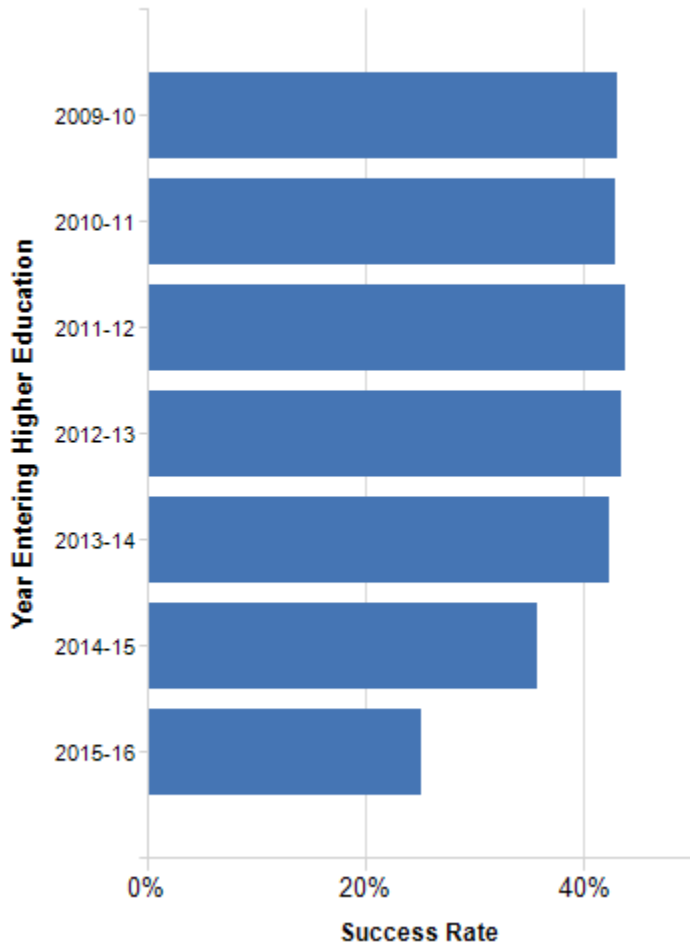


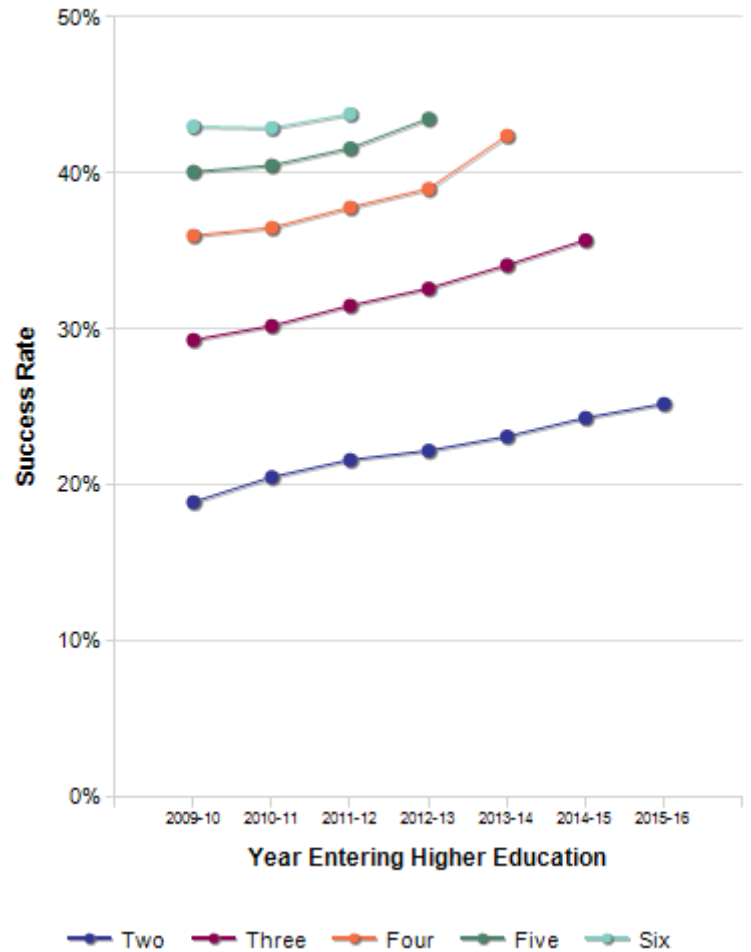
## All Community Colleges - All Students, All Years

This postsecondary success rates report for all community colleges includes students who have earned a certificate, associate or bachelor's degree, or who have transitioned to a public university. Each first-time enrollment class consists of degree-seeking students with adjustments made for students transitioning in or out of an institution.

Cumulative Success



Success Year by Year

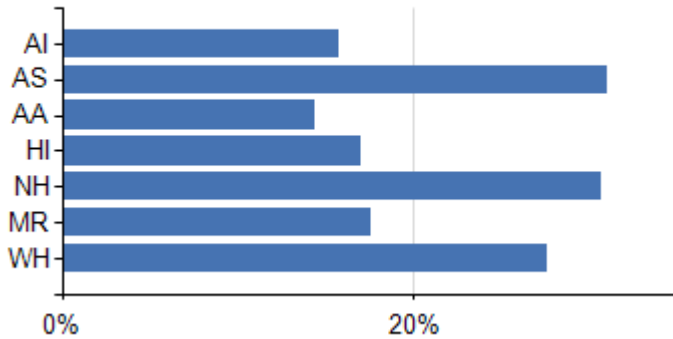


Year Entering Higher Education	After Year Two	After Year Three	After Year Four	After Year Five	After Year Six
2009-10	18.9%	29.3%	36.0%	40.1%	43.0%
2010-11	20.5%	30.2%	36.5%	40.5%	42.9%
2011-12	21.6%	31.5%	37.8%	41.6%	43.8%
2012-13	22.2%	32.6%	39.0%	43.5%	
2013-14	23.1%	34.1%	42.4%		
2014-15	24.3%	35.7%			
2015-16	25.2%				

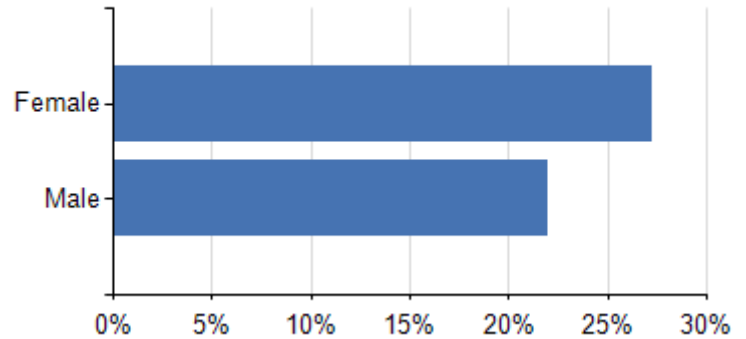
## All Community Colleges - Race/Ethnicity & Gender Breakdown, First Enrolled 2015-16

This report provides postsecondary success rates for students first enrolled during the 2015-16 school year at all community colleges. The report is further broken down by race/ethnicity, gender, and race/ethnicity by gender.

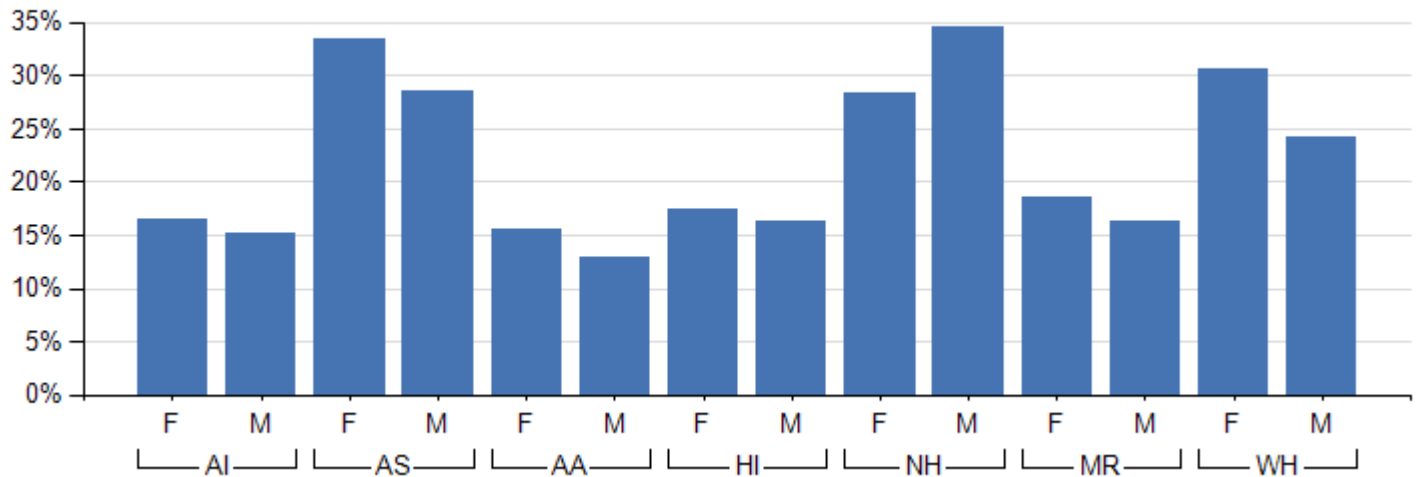
2015-16 Success by Race/Ethnicity



2015-16 Success by Gender



2015-16 Success by Race/Ethnicity & Gender



### Race/Ethnicity:

AI = American Indian or Alaska Native

AS = Asian

AA = Black or African American HI = Hispanic/Latino

NH = Native Hawaiian or Other Pacific Islander

MR = Two or More Races WH = White/Caucasian

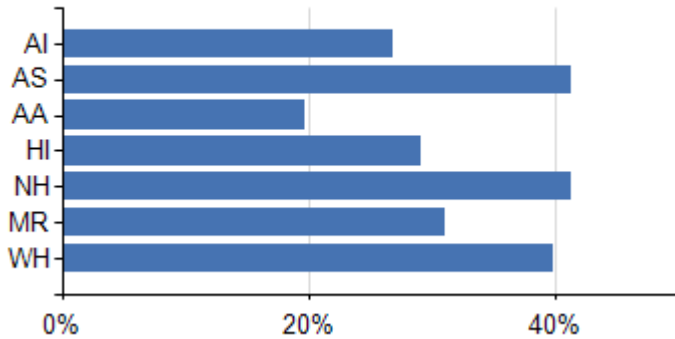
Race/ Ethnicity	Female	Male
	After Year Two	After Year Two
AI	16.5%	15.1%
AS	33.4%	28.6%
AA	15.6%	13.0%
HI	17.5%	16.3%
NH	28.3%	34.5%
MR	18.5%	16.3%
WH	30.7%	24.2%

Students reported without a gender or race/ethnicity designation are not reflected in the breakdowns.

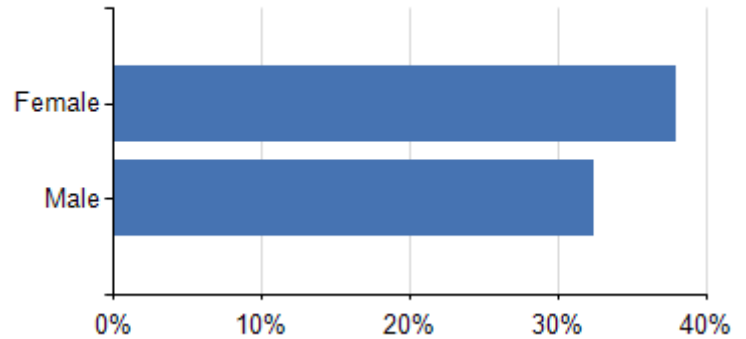
## All Community Colleges - Race/Ethnicity & Gender Breakdown, First Enrolled 2014-15

This report provides postsecondary success rates for students first enrolled during the 2014-15 school year at all community colleges. The report is further broken down by race/ethnicity, gender, and race/ethnicity by gender.

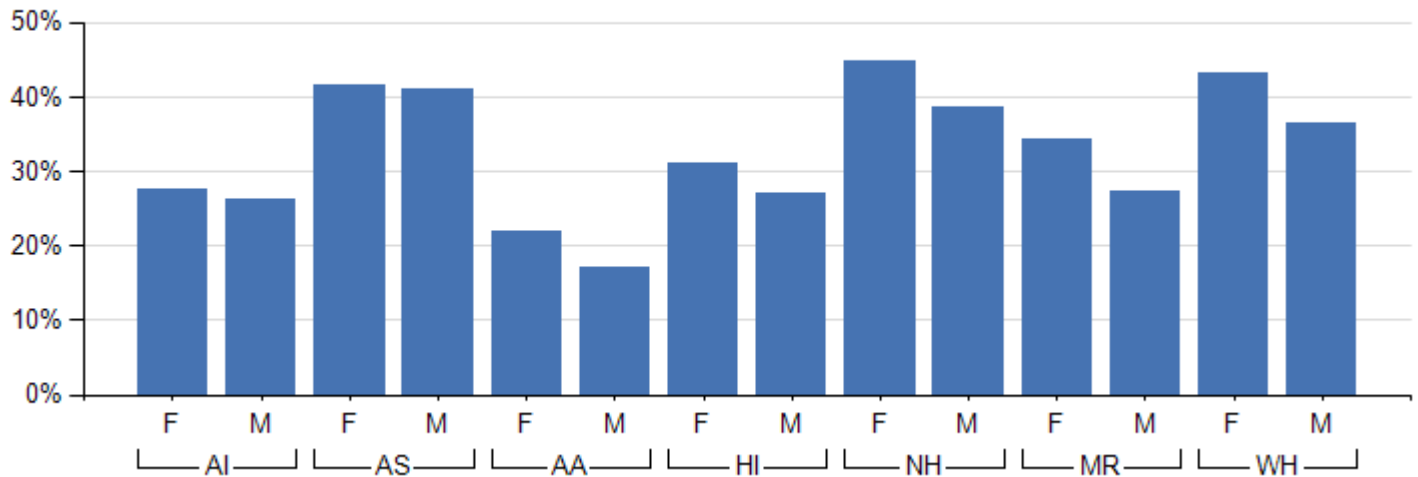
2014-15 Success by Race/Ethnicity



2014-15 Success by Gender



2014-15 Success by Race/Ethnicity & Gender



### Race/Ethnicity:

AI = American Indian or Alaska Native      AS = Asian      AA = Black or African American      HI = Hispanic/Latino  
 NH = Native Hawaiian or Other Pacific Islander      MR = Two or More Races      WH = White/Caucasian

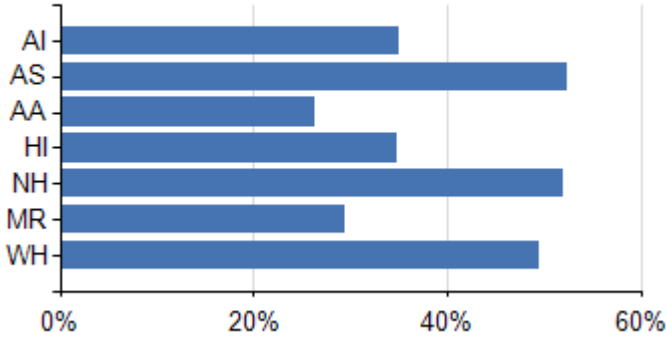
Race/ Ethnicity	Female		Male	
	After Year Two	After Year Three	After Year Two	After Year Three
AI	17.2%	27.5%	13.2%	26.3%
AS	31.2%	41.5%	29.6%	41.0%
AA	14.6%	21.9%	11.5%	17.1%
HI	21.1%	31.0%	17.1%	27.1%
NH	38.3%	44.7%	23.2%	38.5%
MR	24.4%	34.4%	16.7%	27.4%
WH	30.2%	43.1%	23.9%	36.5%

Students reported without a gender or race/ethnicity designation are not reflected in the breakdowns.

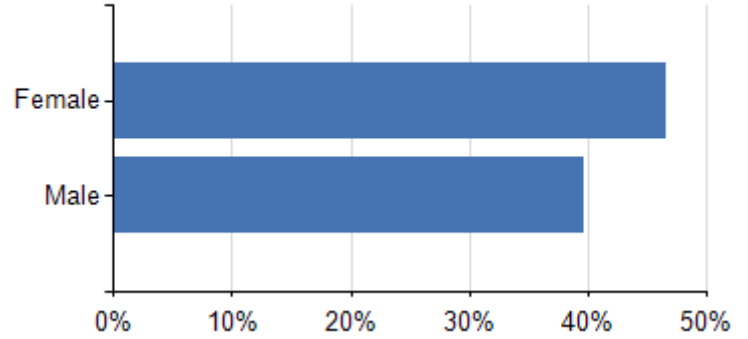
## All Community Colleges - Race/Ethnicity & Gender Breakdown, First Enrolled 2013-14

This report provides postsecondary success rates for students first enrolled during the 2013-14 school year at all community colleges. The report is further broken down by race/ethnicity, gender, and race/ethnicity by gender.

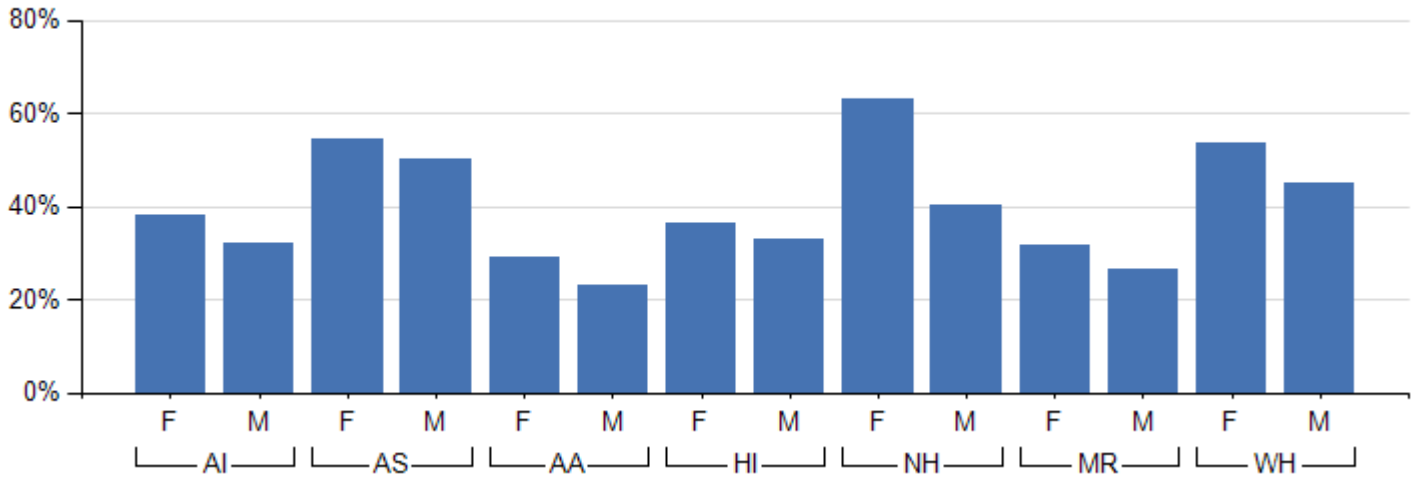
2013-14 Success by Race/Ethnicity



2013-14 Success by Gender



2013-14 Success by Race/Ethnicity & Gender



### Race/Ethnicity:

AI = American Indian or Alaska Native

AS = Asian

AA = Black or African American HI = Hispanic/Latino

NH = Native Hawaiian or Other Pacific Islander

MR = Two or More Races WH = White/Caucasian

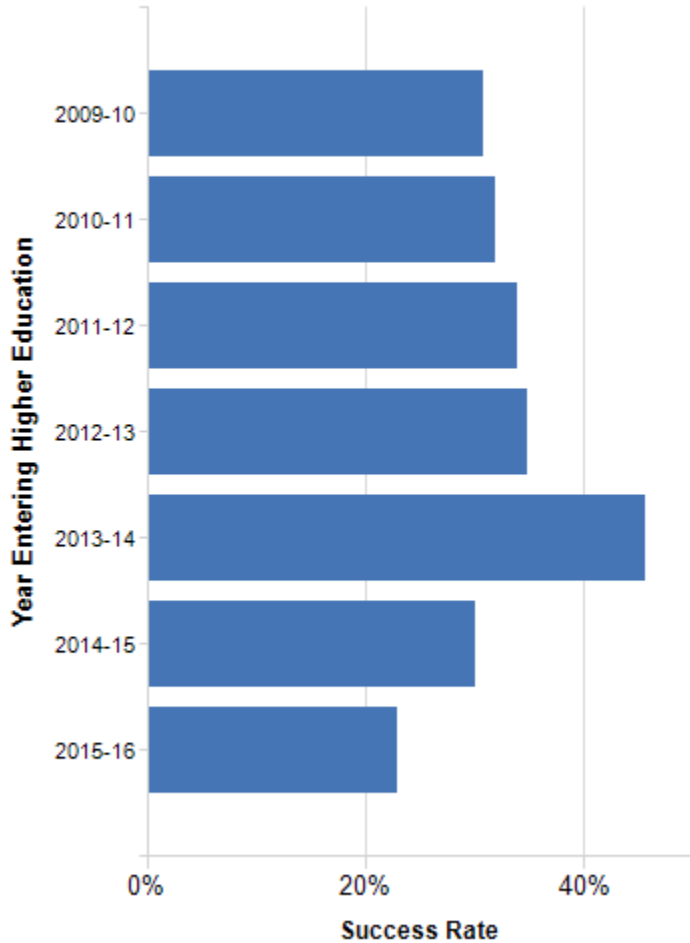
Race/ Ethnicity	Female			Male		
	After Year Two	After Year Three	After Year Four	After Year Two	After Year Three	After Year Four
AI	19.3%	32.1%	38.0%	15.4%	25.1%	32.1%
AS	33.2%	45.3%	54.6%	28.3%	41.2%	50.4%
AA	15.3%	22.5%	29.1%	11.8%	18.1%	22.9%
HI	17.7%	27.5%	36.3%	17.2%	26.0%	33.1%
NH	39.1%	41.3%	63.3%	31.1%	33.3%	40.4%
MR	16.2%	24.8%	31.6%	13.2%	20.9%	26.6%
WH	29.6%	43.3%	53.5%	23.1%	35.9%	44.9%

Students reported without a gender or race/ethnicity designation are not reflected in the breakdowns.

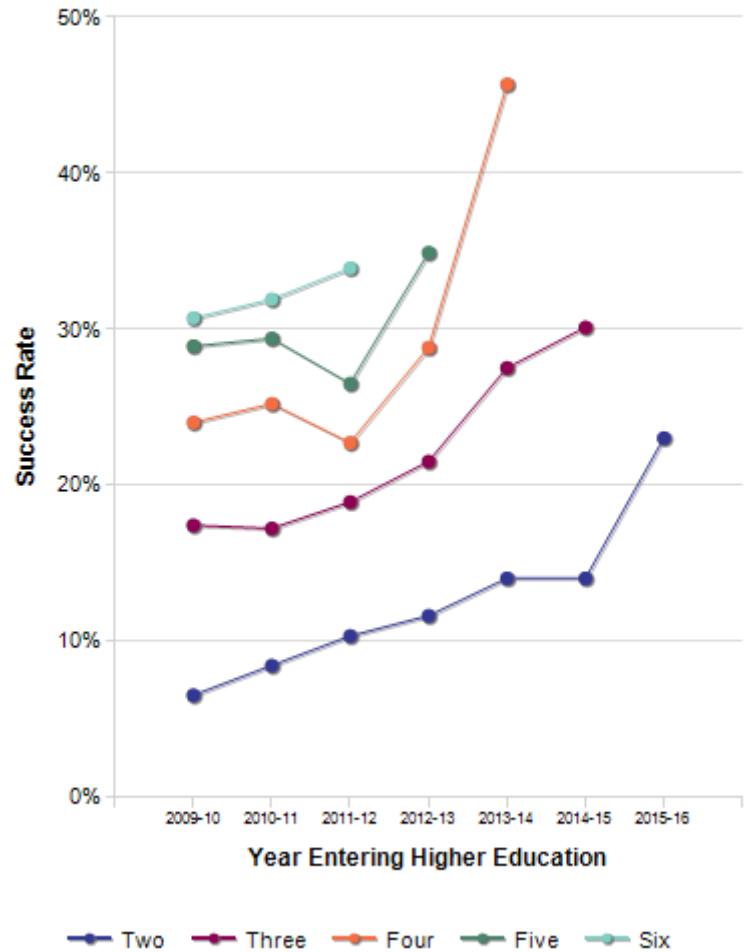
## Kirtland Community College - All Students, All Years

This postsecondary success rates report for Kirtland Community College includes students who have earned a certificate, associate or bachelor's degree, or who have transitioned to a public university. Each first-time enrollment class consists of degree-seeking students with adjustments made for students transitioning in or out of an institution.

**Cumulative Success**



**Success Year by Year**

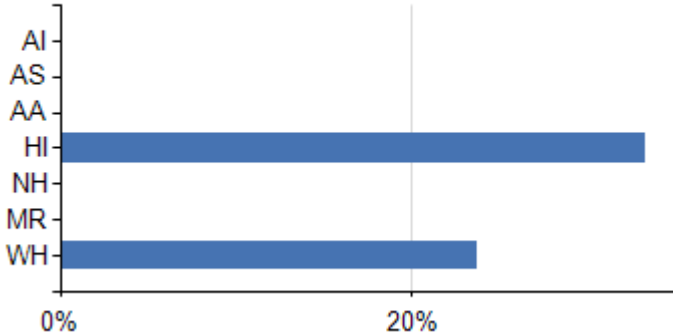


Year Entering Higher Education	After Year Two	After Year Three	After Year Four	After Year Five	After Year Six
2009-10	6.5%	17.4%	24.0%	28.9%	30.7%
2010-11	8.4%	17.2%	25.2%	29.4%	31.9%
2011-12	10.3%	18.9%	22.7%	26.5%	33.9%
2012-13	11.6%	21.5%	28.8%	34.9%	
2013-14	14.0%	27.5%	45.7%		
2014-15	14.0%	30.1%			
2015-16	23.0%				

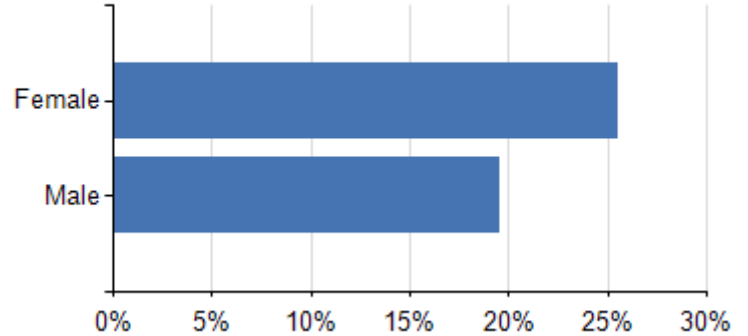
## Kirtland Community College - Race/Ethnicity & Gender Breakdown, First Enrolled 2015-16

This report provides postsecondary success rates for students first enrolled during the 2015-16 school year at Kirtland Community College. The report is further broken down by race/ethnicity, gender, and race/ethnicity by gender.

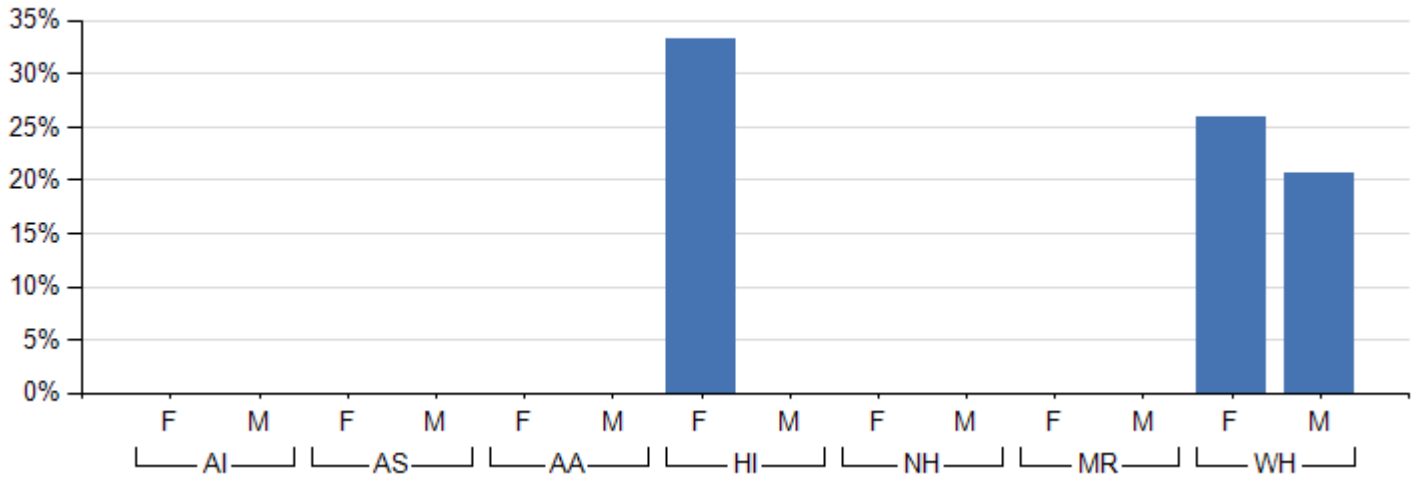
2015-16 Success by Race/Ethnicity



2015-16 Success by Gender



2015-16 Success by Race/Ethnicity & Gender



### Race/Ethnicity:

AI = American Indian or Alaska Native

AS = Asian

AA = Black or African American HI = Hispanic/Latino

NH = Native Hawaiian or Other Pacific Islander

MR = Two or More Races

WH = White/Caucasian

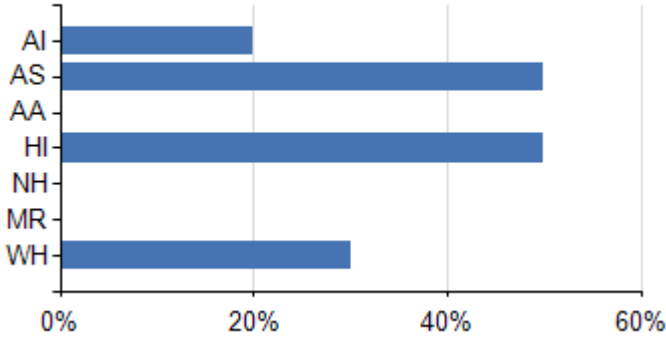
Race/ Ethnicity	Female	Male
	After Year Two	After Year Two
AI	0.0%	0.0%
AS	0.0%	0.0%
AA	0.0%	0.0%
HI	33.3%	
NH		
MR		
WH	25.9%	20.6%

Students reported without a gender or race/ethnicity designation are not reflected in the breakdowns.

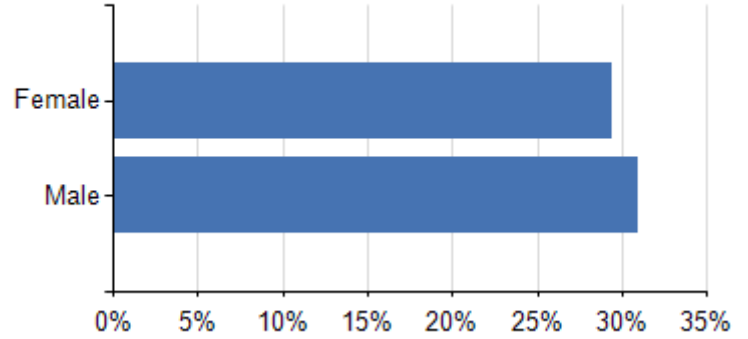
## Kirtland Community College - Race/Ethnicity & Gender Breakdown, First Enrolled 2014-15

This report provides postsecondary success rates for students first enrolled during the 2014-15 school year at Kirtland Community College. The report is further broken down by race/ethnicity, gender, and race/ethnicity by gender.

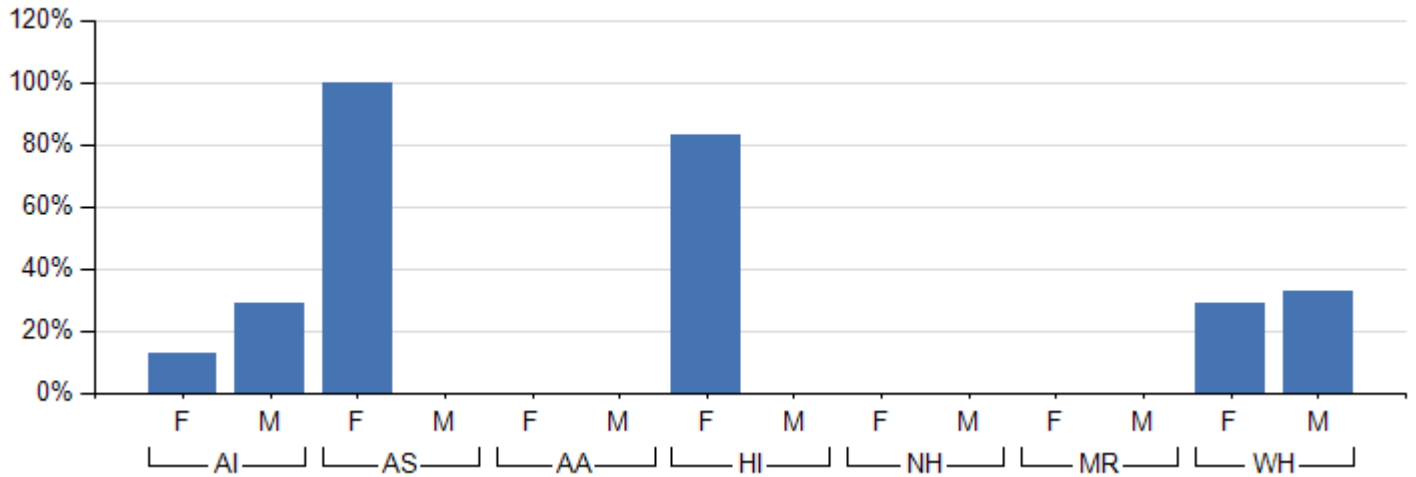
2014-15 Success by Race/Ethnicity



2014-15 Success by Gender



2014-15 Success by Race/Ethnicity & Gender



**Race/Ethnicity:**

AI = American Indian or Alaska Native      AS = Asian      AA = Black or African American      HI = Hispanic/Latino  
 NH = Native Hawaiian or Other Pacific Islander      MR = Two or More Races      WH = White/Caucasian

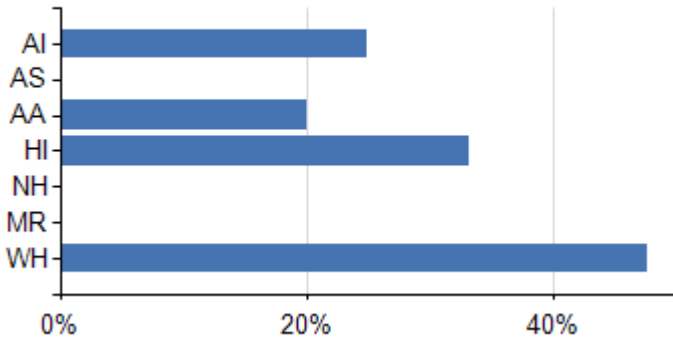
Race/ Ethnicity	Female		Male	
	After Year Two	After Year Three	After Year Two	After Year Three
AI	0.0%	12.5%	14.3%	28.6%
AS	50.0%	100.0%	0.0%	0.0%
AA	0.0%	0.0%	0.0%	0.0%
HI	0.0%	83.3%	0.0%	0.0%
NH				
MR				
WH	15.7%	28.6%	11.8%	32.4%

Students reported without a gender or race/ethnicity designation are not reflected in the breakdowns.

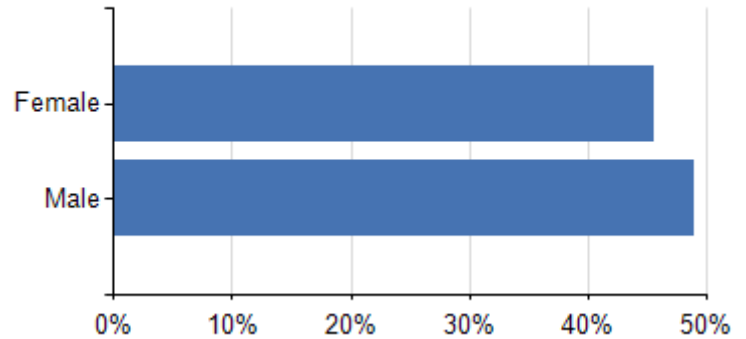
## Kirtland Community College - Race/Ethnicity & Gender Breakdown, First Enrolled 2013-14

This report provides postsecondary success rates for students first enrolled during the 2013-14 school year at Kirtland Community College. The report is further broken down by race/ethnicity, gender, and race/ethnicity by gender.

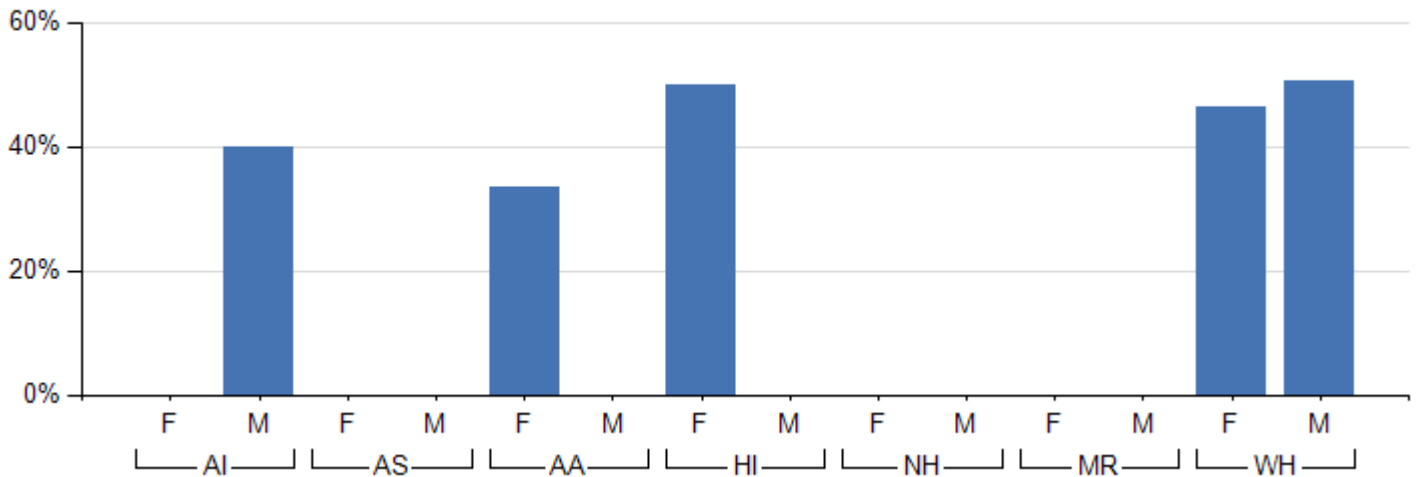
2013-14 Success by Race/Ethnicity



2013-14 Success by Gender



2013-14 Success by Race/Ethnicity & Gender



### Race/Ethnicity:

AI = American Indian or Alaska Native      AS = Asian      AA = Black or African American      HI = Hispanic/Latino  
 NH = Native Hawaiian or Other Pacific Islander      MR = Two or More Races      WH = White/Caucasian

Race/ Ethnicity	Female			Male		
	After Year Two	After Year Three	After Year Four	After Year Two	After Year Three	After Year Four
AI	33.3%	33.3%	0.0%	0.0%	0.0%	40.0%
AS				0.0%	0.0%	0.0%
AA	0.0%	25.0%	33.3%	0.0%	0.0%	0.0%
HI	0.0%	50.0%	50.0%		0.0%	0.0%
NH						
MR						
WH	10.4%	23.8%	46.2%	20.7%	34.4%	50.4%

Students reported without a gender or race/ethnicity designation are not reflected in the breakdowns.